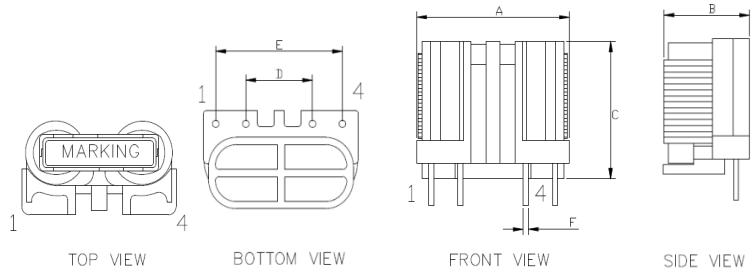
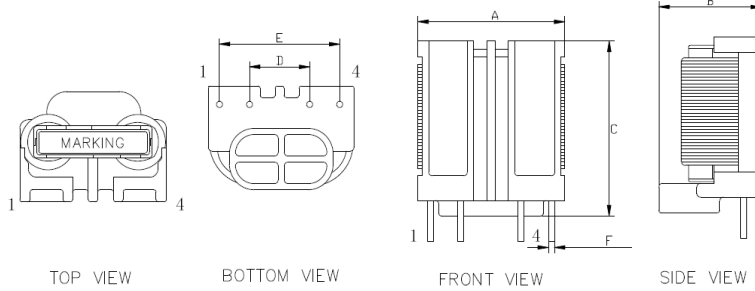


# FT-C TYPE Common Mode Choke

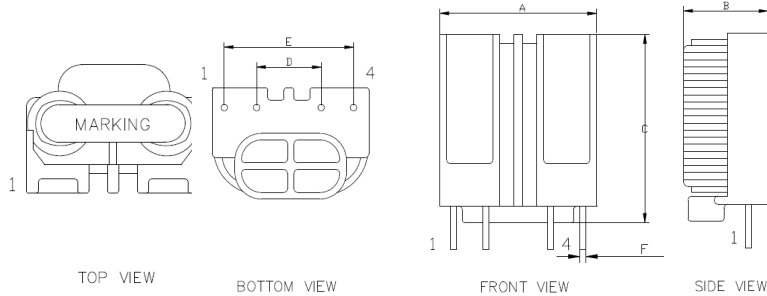
Type:1



Type:2



Type:3



## Electrical

- **Rated Voltage:** AC/DC 250V
- **Inductance range:** 4.5~24.0mH  $\pm 30\%$   
**Test Condition:** 10KHz 0.3V
- **Operating Temperature Range:** -25 ~ 120°C
- **Withstanding Voltage:** AC 2.0KV 60Sec.  
**(Winding to Winding)**
- **Rated current range:** 1.0~5.0A

## Features

- Winding directly to the closed magnetic path core.
- Use the flat wire,improving the space factor.
- Single-phase winding,thereby dramatically reduce stray capacitance.
- Achieve a high inductance in both common mode and normal mode.
- Achieve a high magnetic saturation characteristics.
- No layer-short,higher quality.
- High attenuation to the normal mode noise
- Winding automatic

Part No	L(mH) $\pm 30\%$ @10KHz	IDC (A)	Dim A Max mm	Dim B Max mm	Dim C Max mm	Dim D $\pm 0.5$ mm	Dim E $\pm 0.5$ mm	Dim F $\pm 0.1$ mm	Type
FT15-010125VC	12.5	1.0	22.5	14.5	19.0	9.0	17.0	0.7	1
FT15-010100VC	10.0	1.0							
FT15-1R5070VC	7.0	1.5							
FT19-010225VC	22.5	1.0	26.0	16.5	27.0	8.0	18.0	0.7	2
FT19-1R5180VC	18.0	1.5							
FT19-020115VC	11.5	2.0							
FT19-030075VC	7.5	3.0	27.0	17.5	34.0	10.0	20.0	0.8	3
FT19-3R5055VC	5.5	3.5							
FT24-020240VC	24.0	2.0							
FT24-030160VC	16.0	3.0							
FT24-3R5115VC	11.5	3.5							
FT24-050045VC	4.5	5.0							